

SEAPLACE

1925-2089 GULF OF MEXICO DRIVE, LONGBOAT KEY

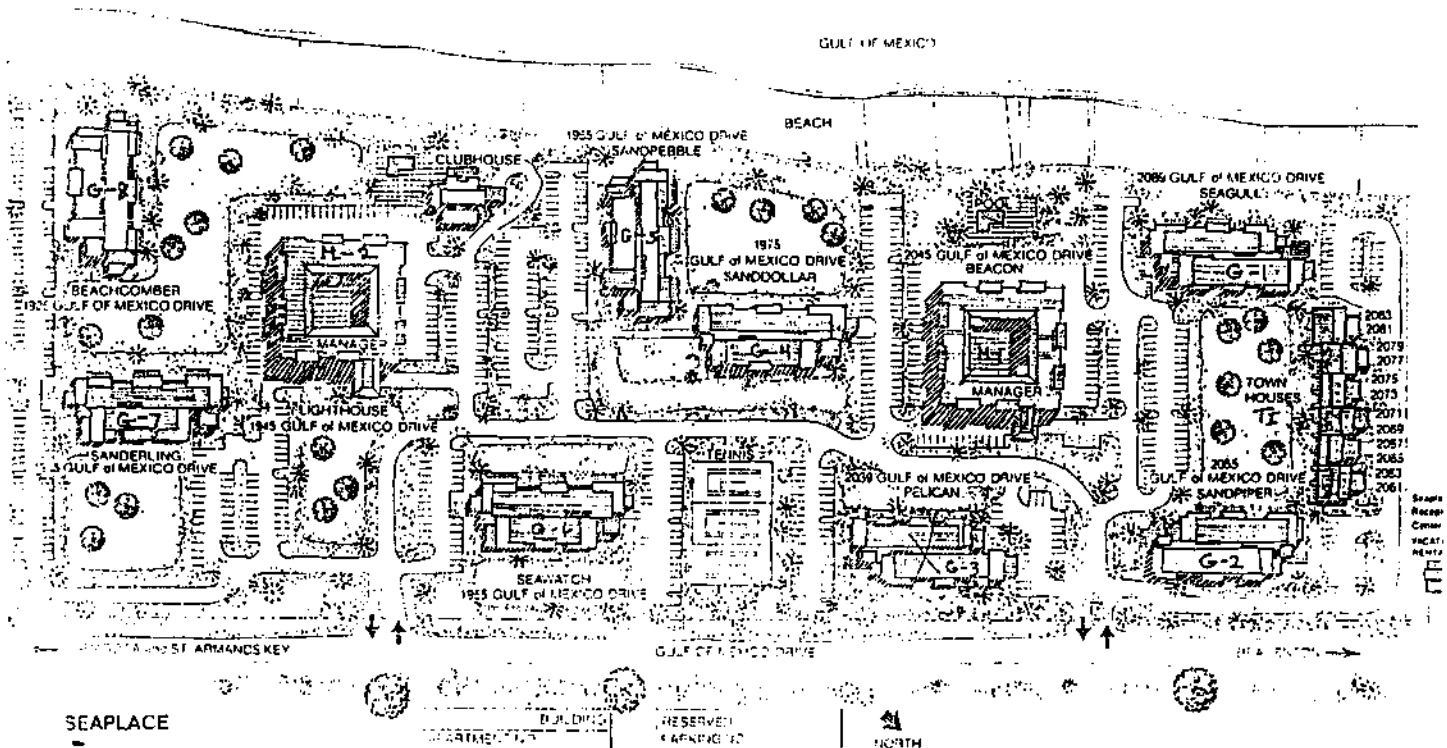
Eleven garden and mid-rise buildings are set amid beautifully landscaped grounds in this extremely popular, secured community. Nearly one-half mile of white sand beach is just one of the many wonderful amenities Seaplace has to offer. Others include two heated swimming pools, spas, tennis courts, clubhouse, children's playground, exercise facilities, winding walkways and an underpass to Longboat's bayside bicycle path. A variety of floor plans are available and all offer laundry facilities.



Price Range: _____
 Number of Units: 460
 Tennis Courts? Yes
 NOTES: _____

Rental Restrictions: 2 mo. min.
 Pets allowed? No
 Boat Dock? No

SITE PLAN



GULF OF MEXICO

BEACH

1966 GULF of MEXICO DRIVE
SANDPEBBLE

FOOT
CLUBHOUSE

2068 GULF of MEXICO DRIVE
SEAGULL?

1875
GULF of MEXICO DRIVE
SANDOLLAR

2045 GULF of MEXICO DRIVE
BEACON

BEACHCOMBER
1925 GULF of MEXICO DRIVE

MANAGER

MANAGER

TOWN
HOUSES

LIGHTHOUSE

1945 GULF of MEXICO DRIVE

TENNIS

SANDERLING
1935 GULF of MEXICO DRIVE

2065
GULF of MEXICO DRIVE
SANDPIPER

SEAWATCH

1956 GULF of MEXICO DRIVE

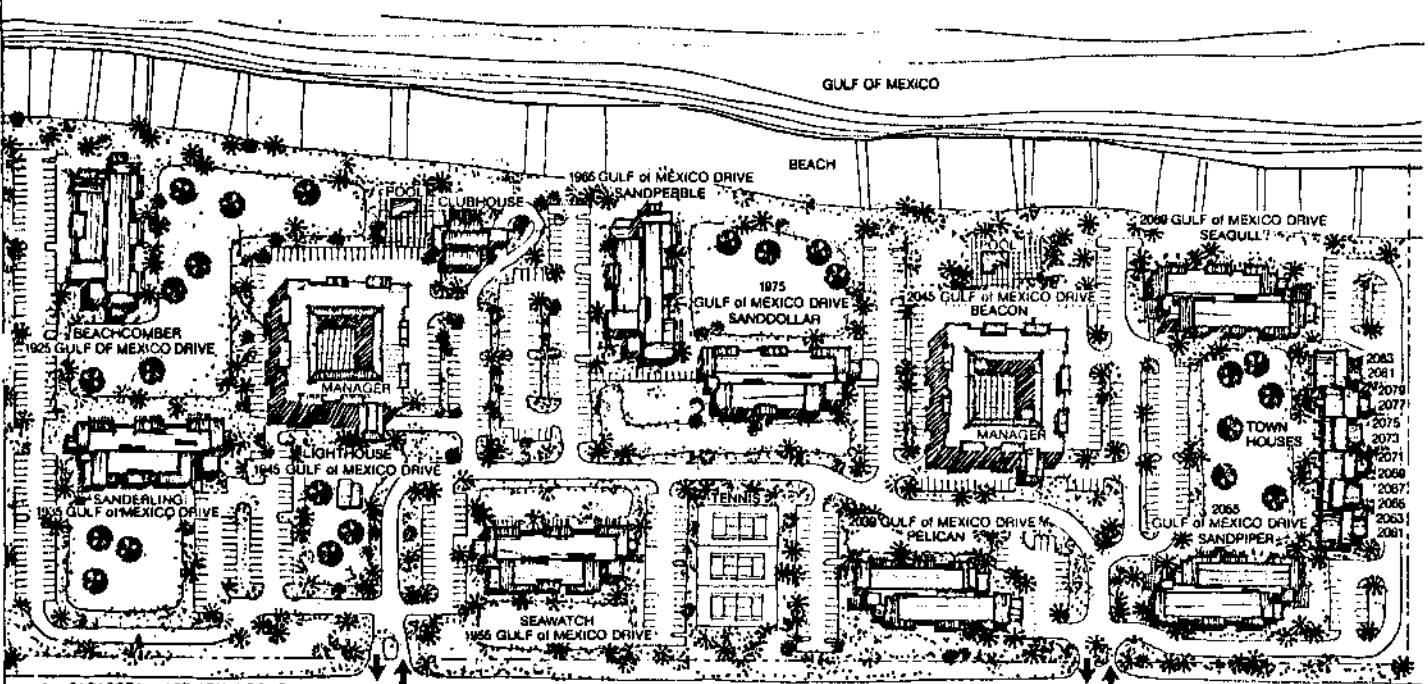
2008 GULF of MEXICO DRIVE
PELICAN

2083
2081
2078
2077
2075
2073
2071
2068
2067
2066
2063
2061

← SARASOTA and ST. ARMANDS KEY

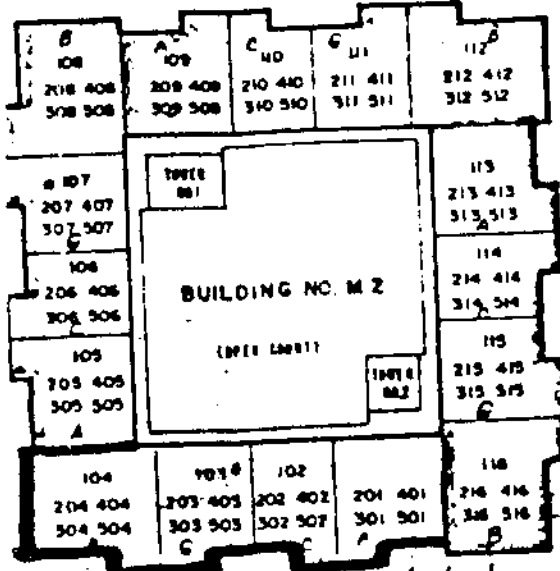
GULF OF MEXICO DRIVE

TO THE TOWN PLAZA and BRADENTON →



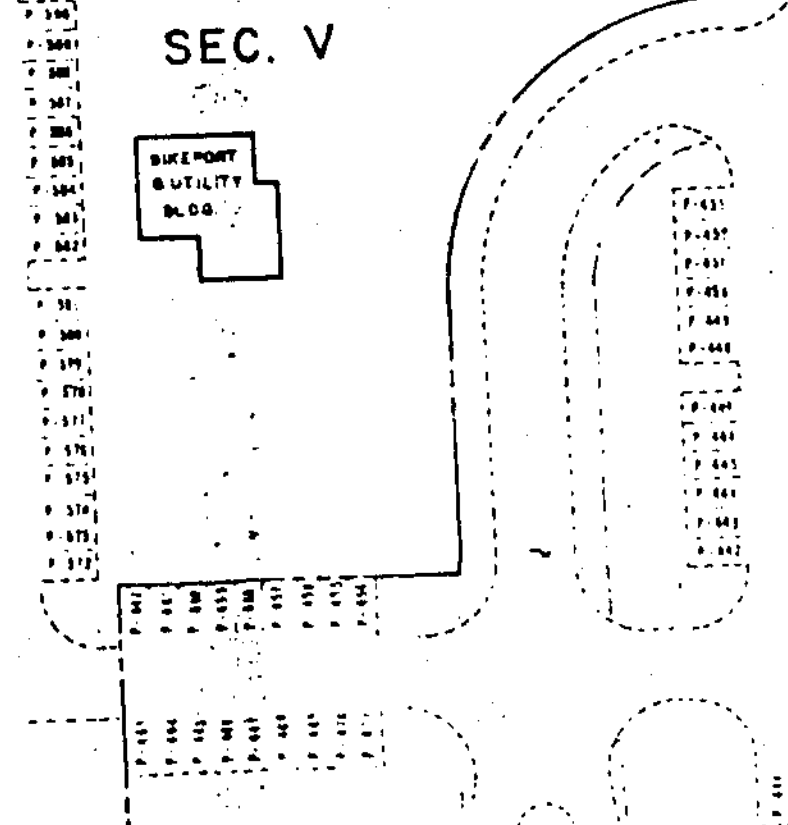
CLUBHOUSE

P-371 P-372 P-373 P-374 P-375 P-376 P-377 P-378 P-379 P-380 P-381 P-382 P-383 P-384 P-385 P-386 P-387 P-388 P-389 P-390 P-391 P-392 P-393 P-394 P-395 P-396 P-397 P-398 P-399 P-400

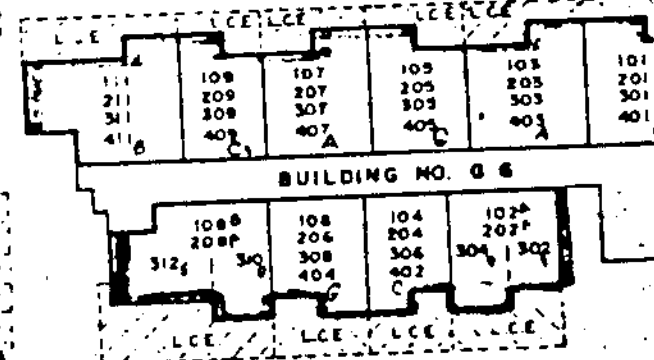


SEC. V

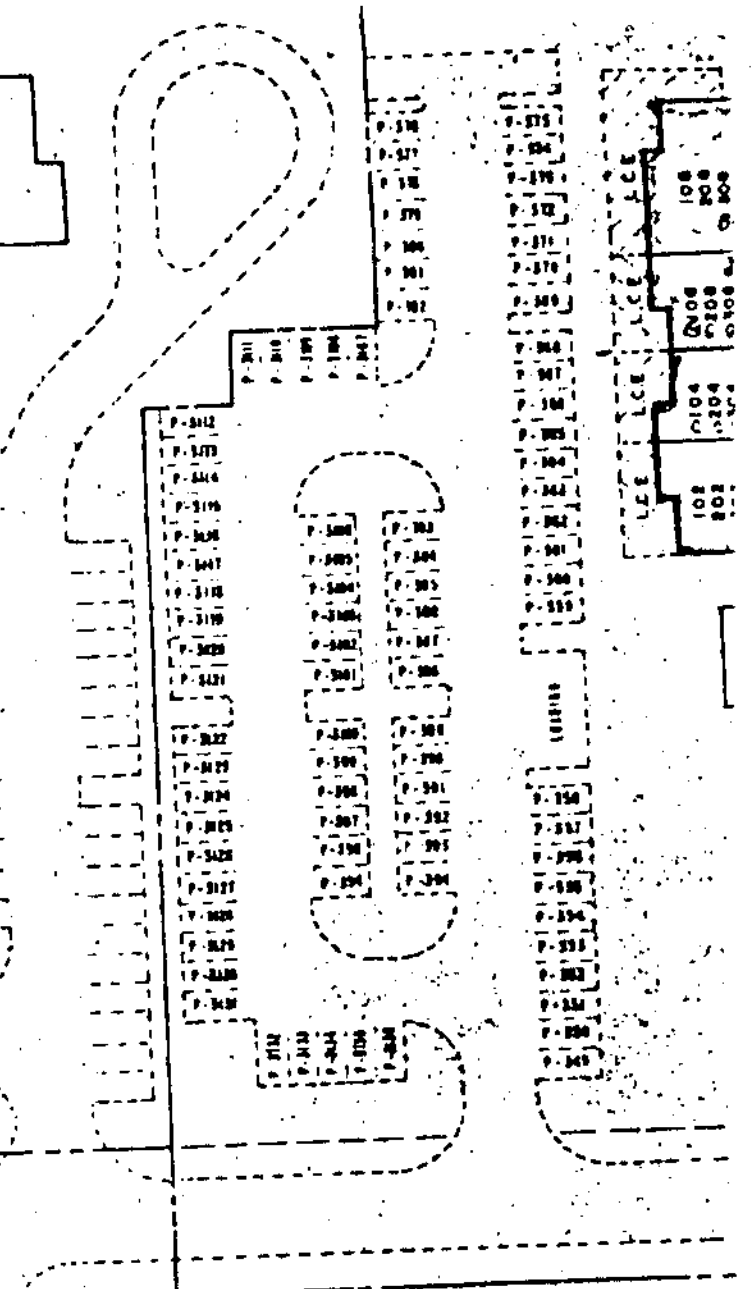
BIKE PORT
& UTILITY
BLOG



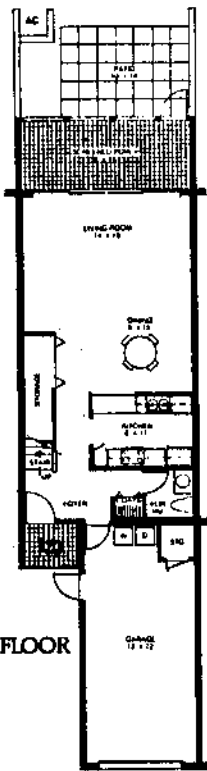
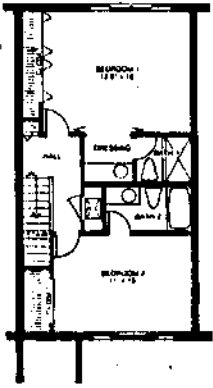
P-475 P-476 P-477 P-478 P-479 P-480 P-481 P-482 P-483 P-484 P-485 P-486 P-487 P-488 P-489 P-490 P-491 P-492 P-493 P-494 P-495 P-496 P-497 P-498 P-499 P-500



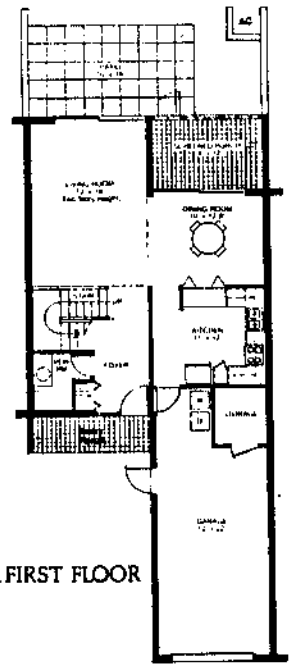
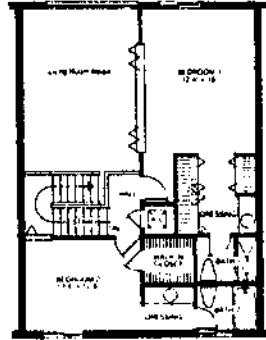
SEC. IV



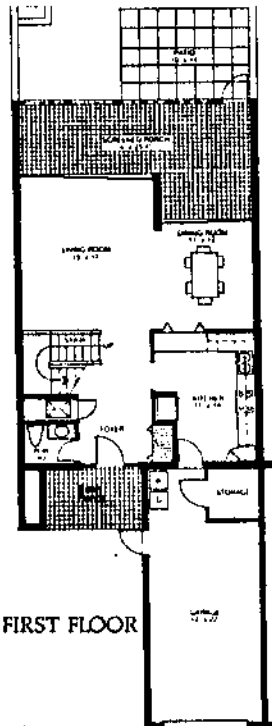
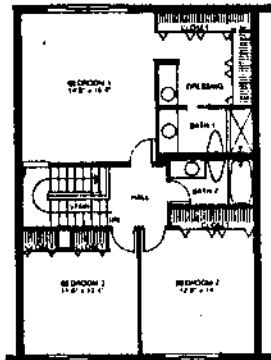
TOWNHOUSE A
FLOOR PLAN



TOWNHOUSE B
FLOOR PLAN

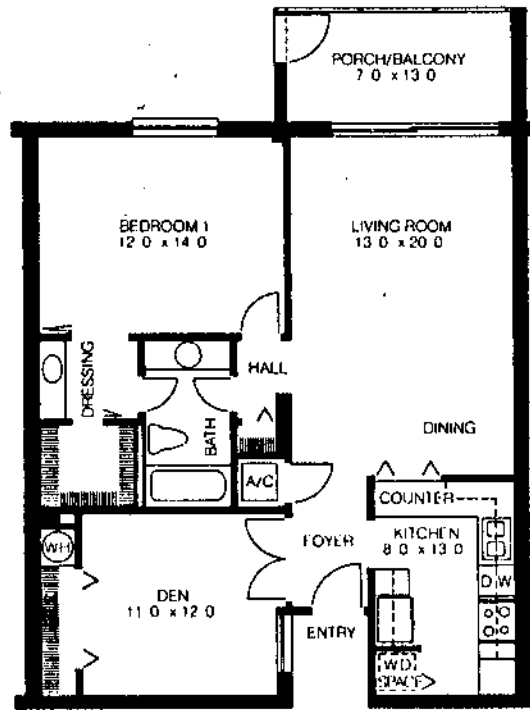


TOWNHOUSE C
FLOOR PLAN

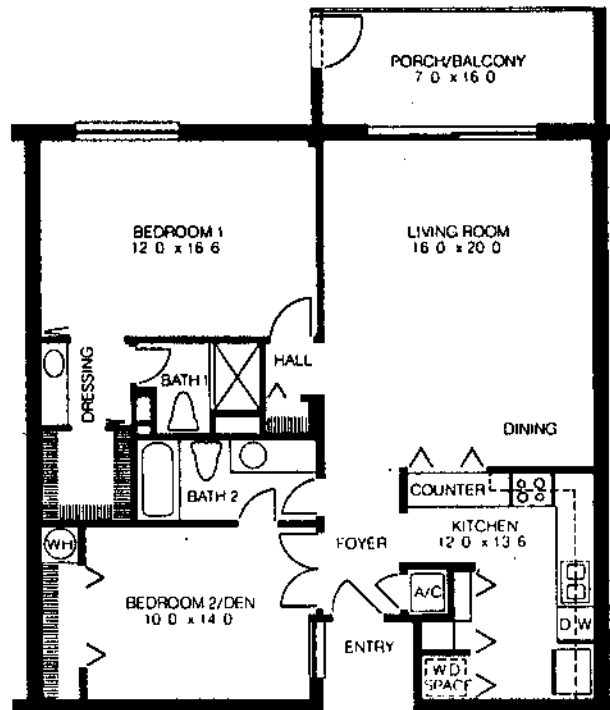


ROOM DIMENSIONS ARE APPROXIMATE. FOR EXACT DIMENSIONS REFER TO CONDOMINIUM DOCUMENTS.
ALL FLOOR PLANS MAY BE REVERSED DEPENDING ON ORIENTATION.

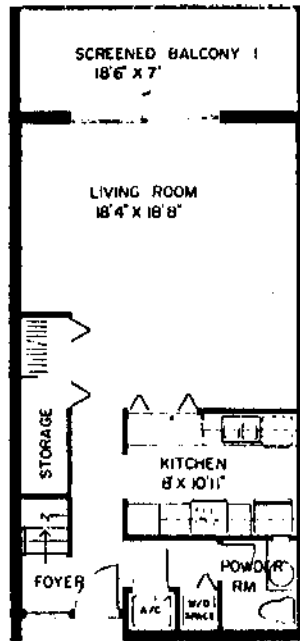
APARTMENT C



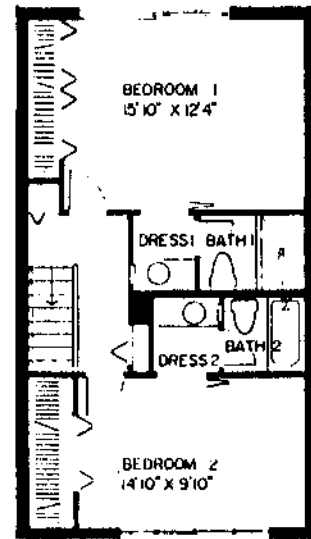
APARTMENT G



APARTMENT D

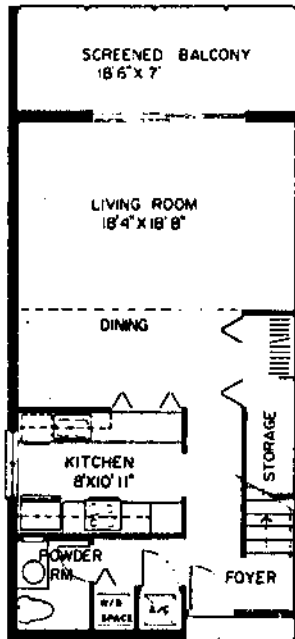


FIRST FLOOR

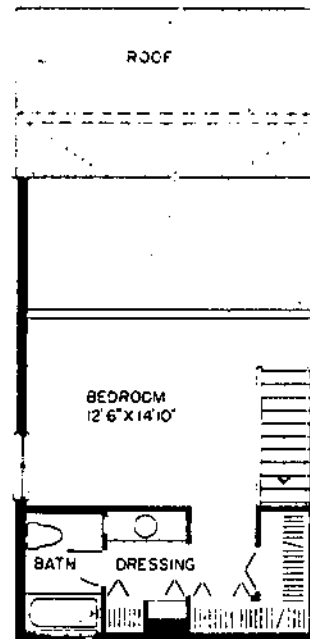


SECOND FLOOR

APARTMENT E

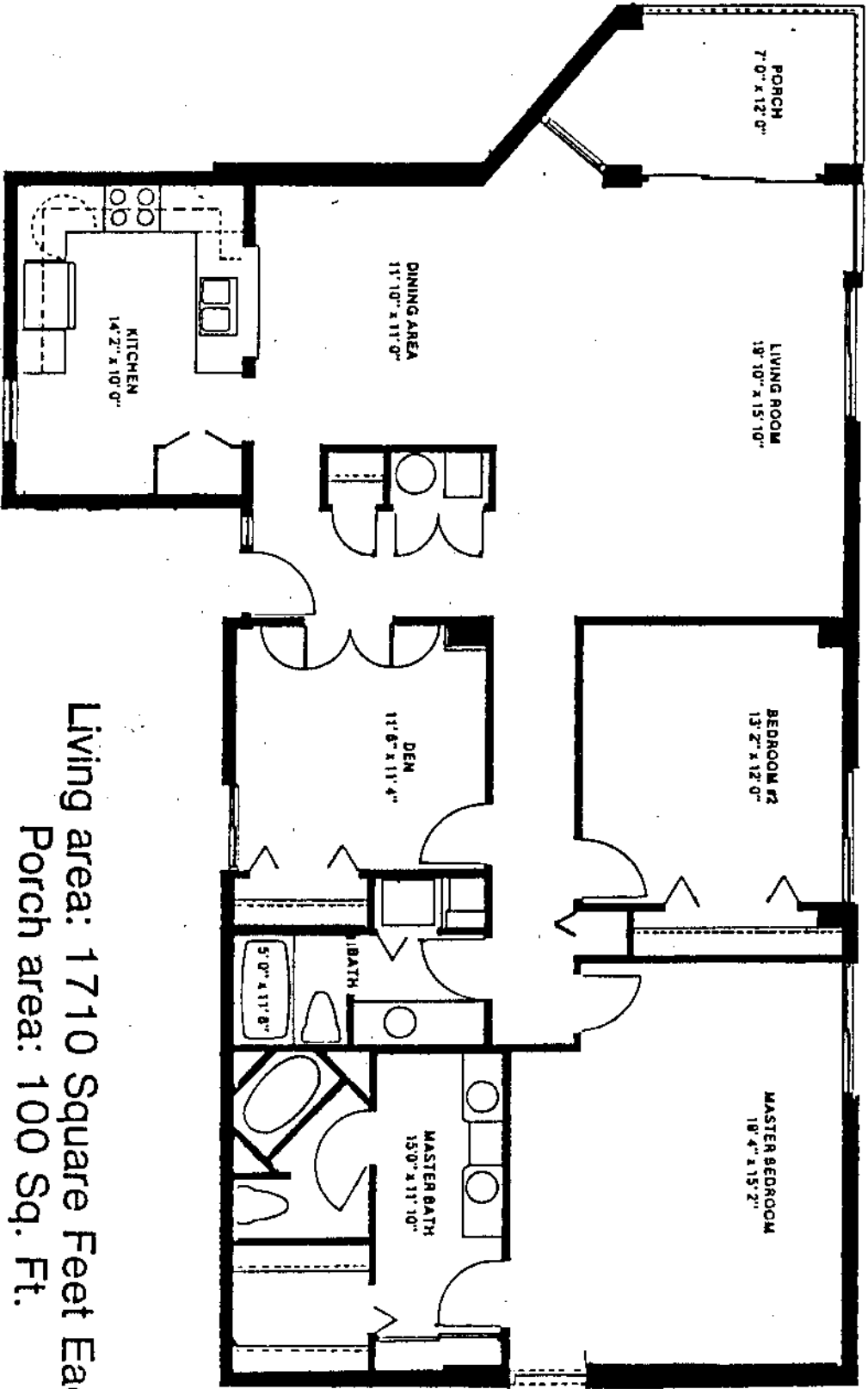


FIRST FLOOR



SECOND FLOOR

ROOM DIMENSIONS ARE APPROXIMATE. FOR EXACT DIMENSIONS REFER TO CONDOMINIUM DOCUMENTS.
ALL FLOOR PLANS MAY BE REVERSED DEPENDING ON ORIENTATION.



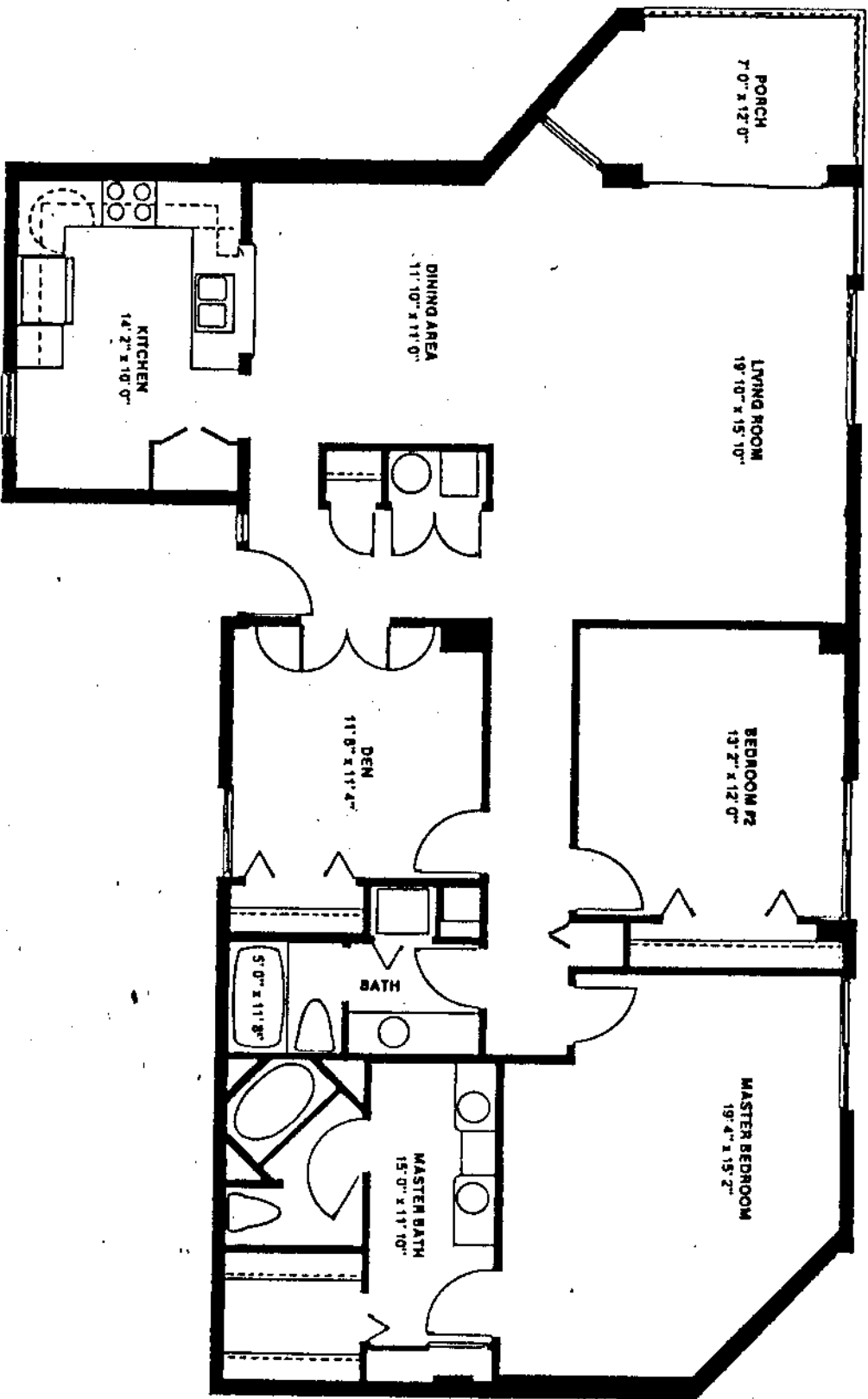
Living area: 1710 Square Feet Each

Porch area: 100 Sq. Ft.

2 East End Units

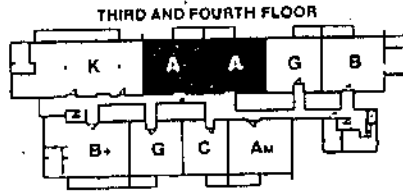
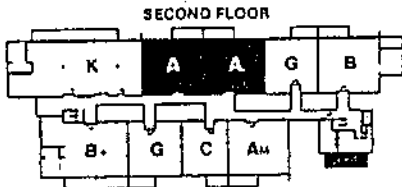
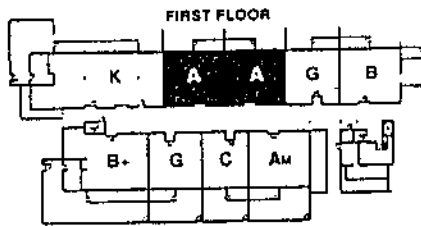
4 Central Units

Living area: 1690 Square Feet Each
Porch area: 100 Sq. Ft.

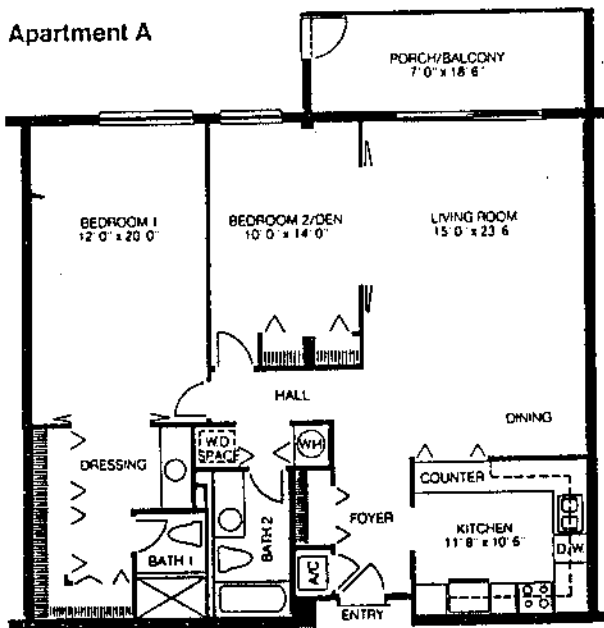


FLOOR PLANS - SEAPLACE

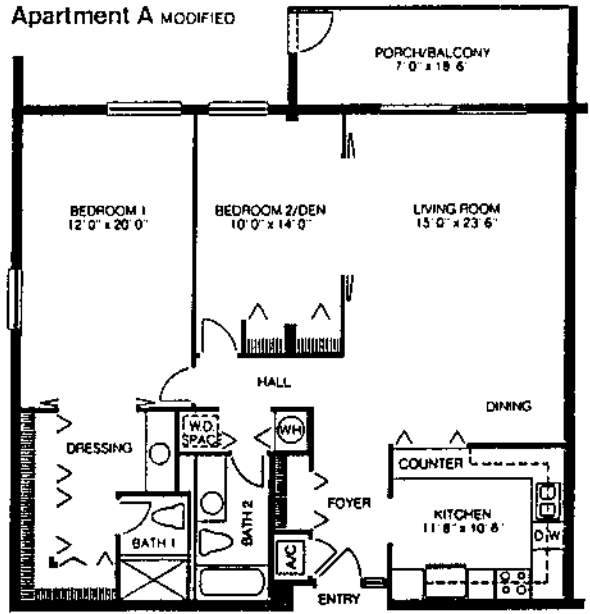
Room dimensions are approximate. For exact dimensions refer to condominium documents. All floor plans may be reversed depending on orientation.



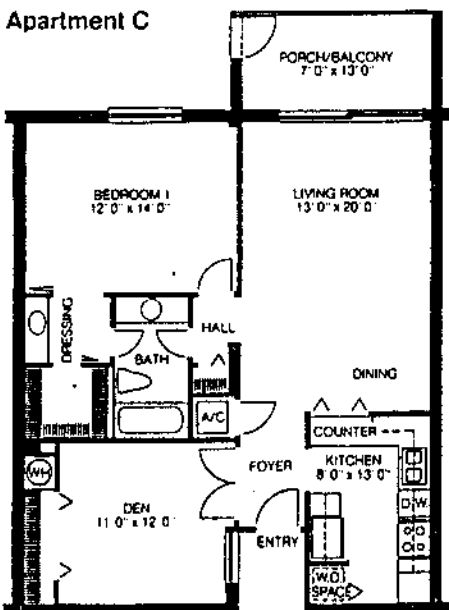
Apartment A



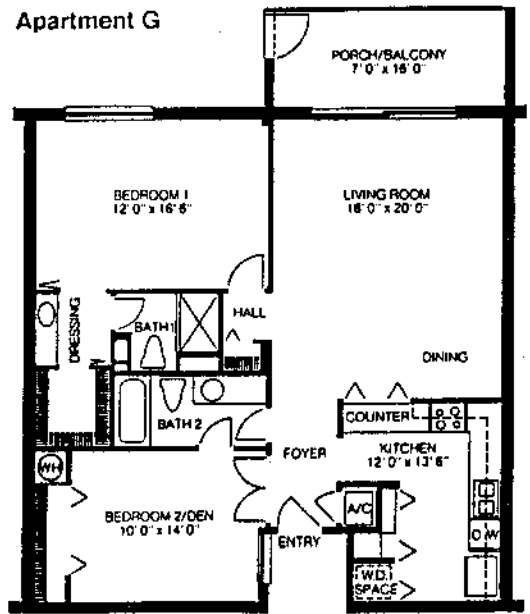
Apartment A MODIFIED



Apartment C

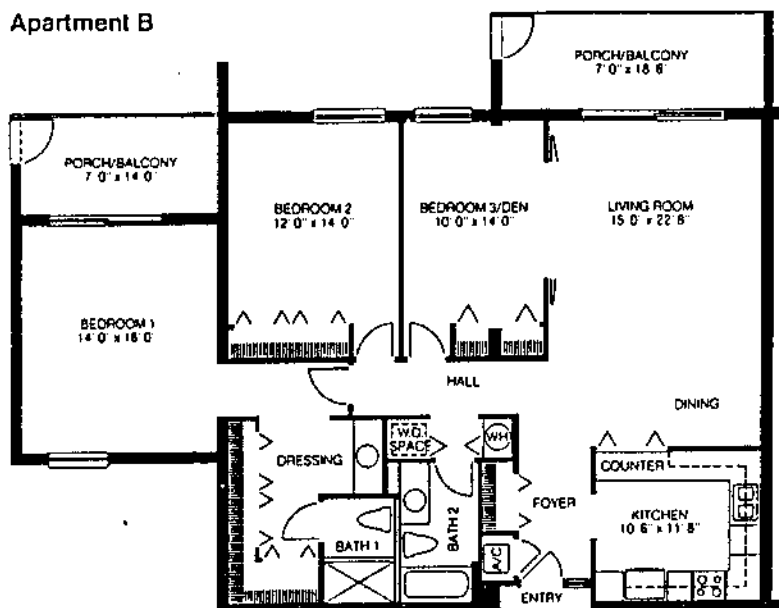


Apartment G

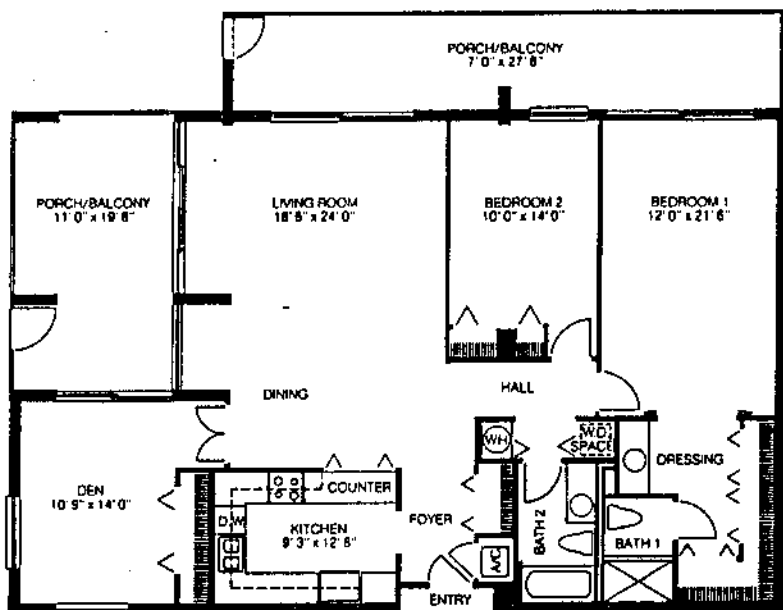


FLOOR PLANS - SEAPLACE

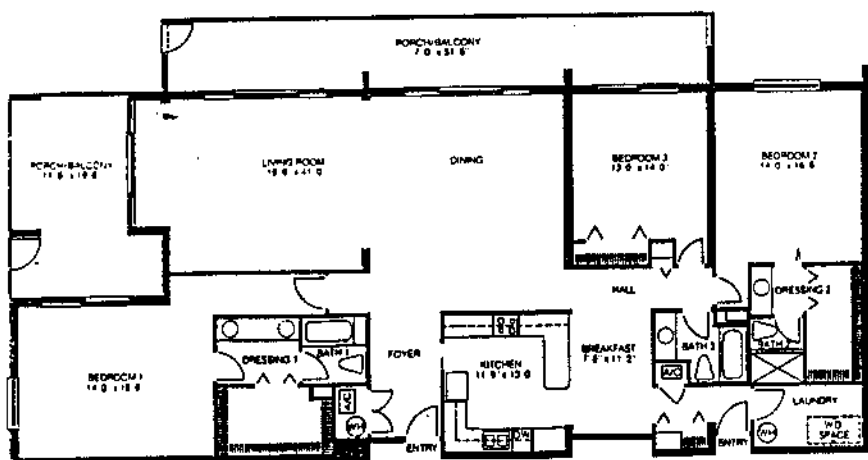
Apartment B



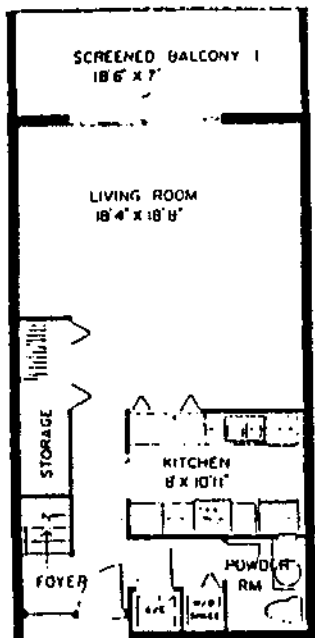
Apartment B modified



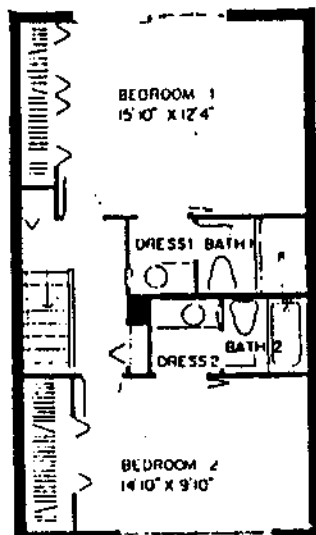
Apartment K



APARTMENT D

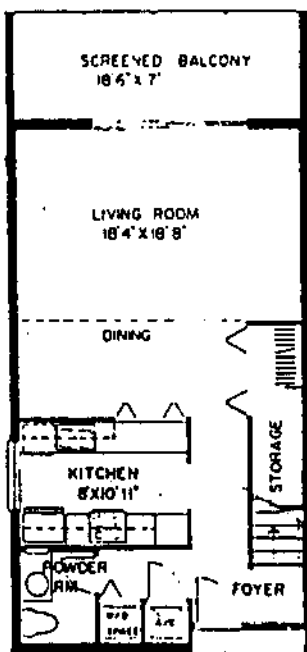


FIRST FLOOR

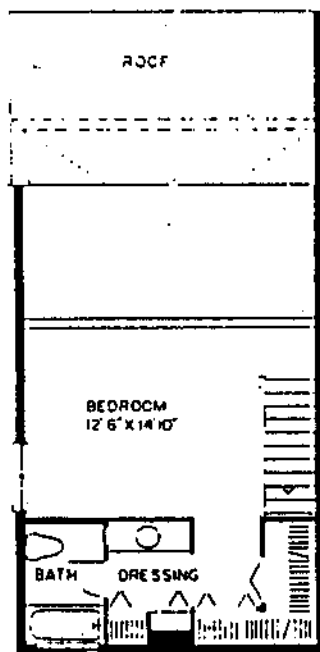


SECOND FLOOR

APARTMENT E



FIRST FLOOR

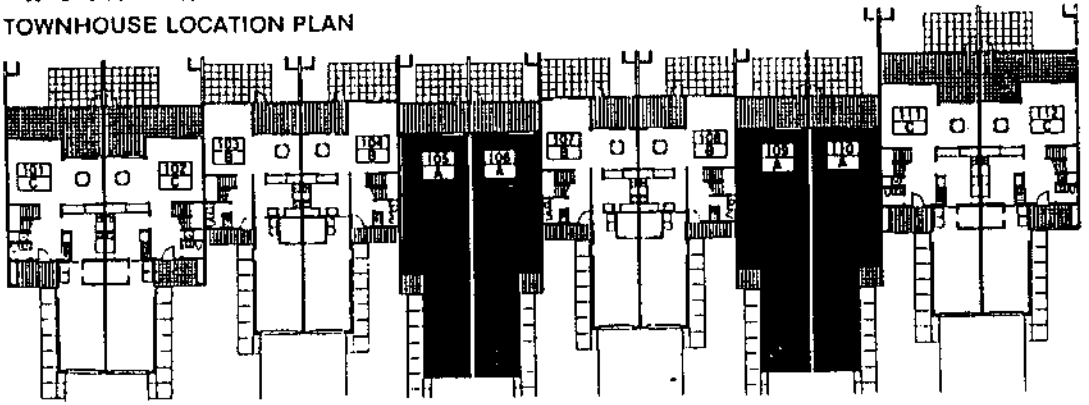


SECOND FLOOR

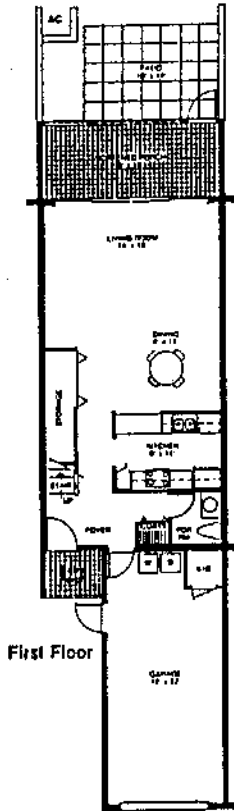
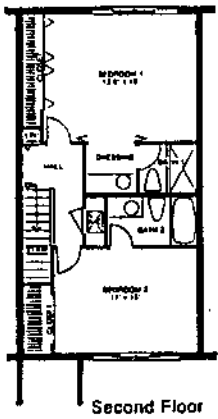
FLOOR PLANS - SEAPLACE

Room dimensions are approximate. For exact dimensions refer to condominium documents. All floor plans may be reversed depending on orientation.

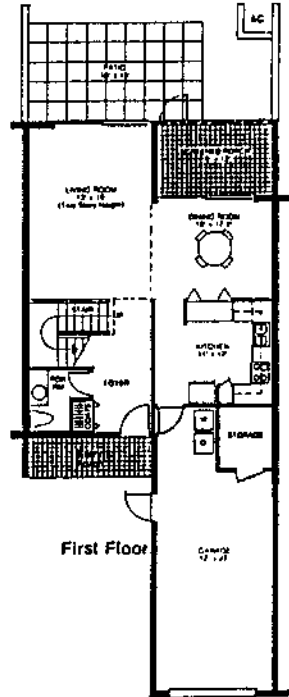
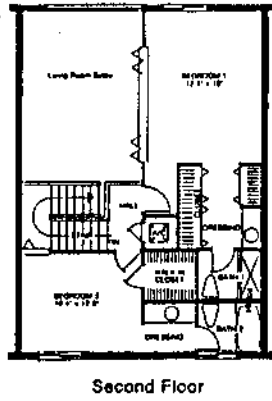
TOWNHOUSE LOCATION PLAN



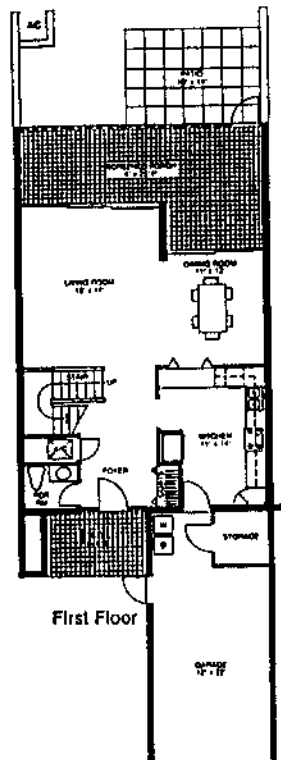
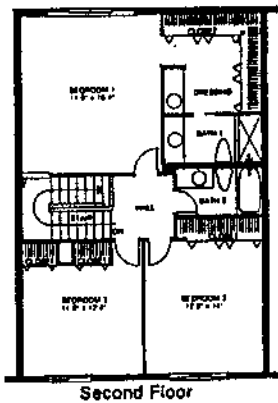
TOWNHOUSE A FLOOR PLAN

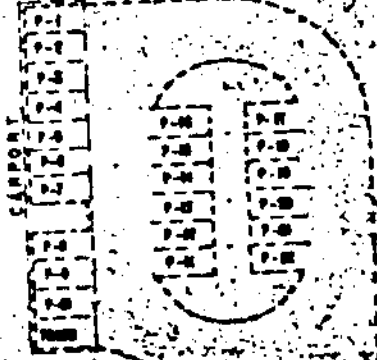
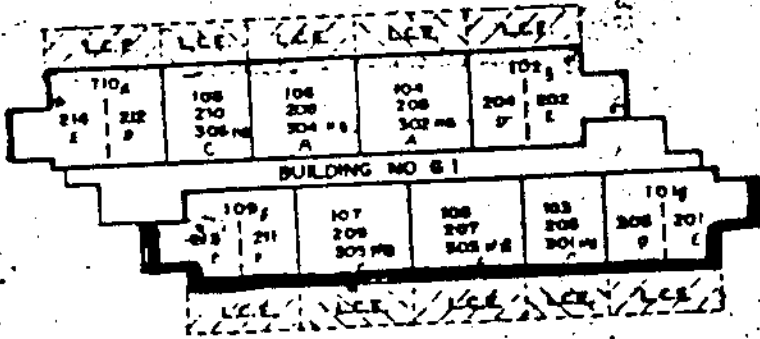


TOWNHOUSE B FLOOR PLAN

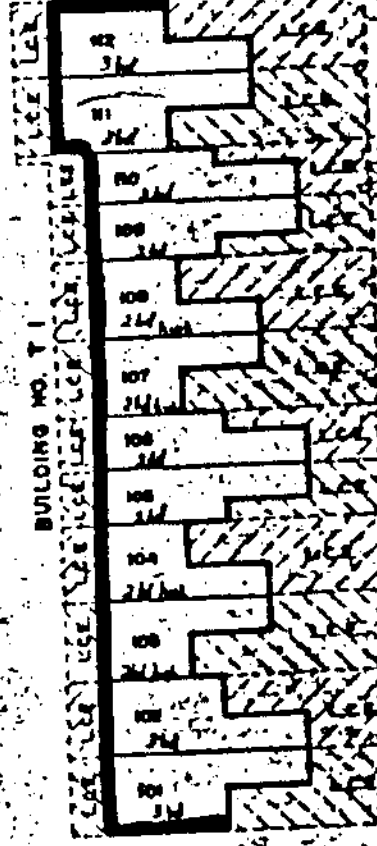


TOWNHOUSE C FLOOR PLAN

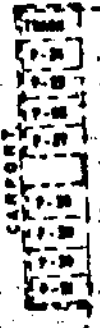
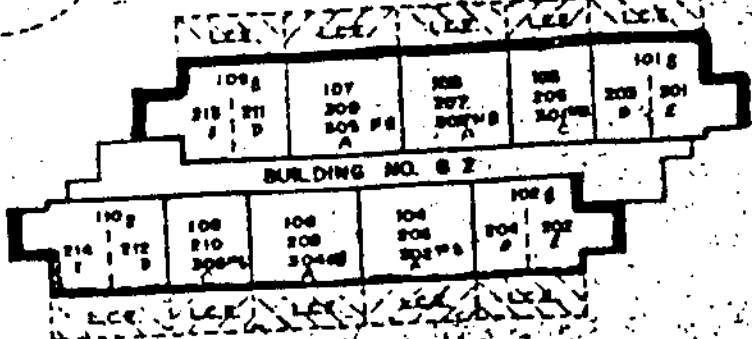




SURPORT



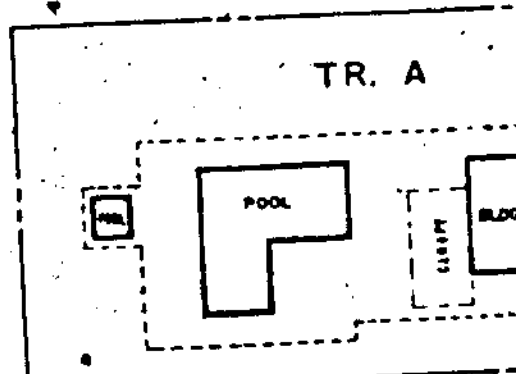
SEC. I (CB 7, PG. 9)



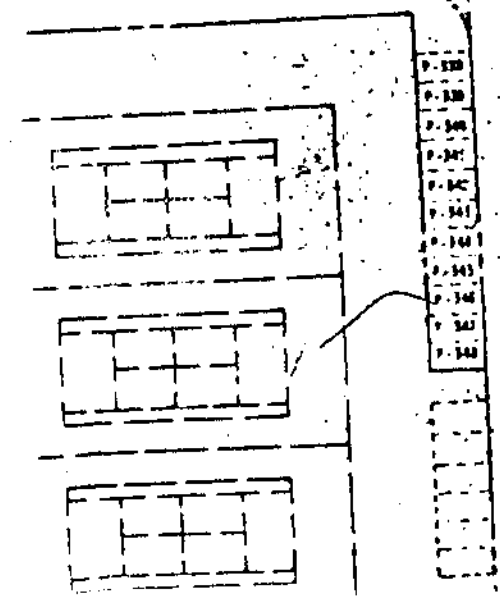
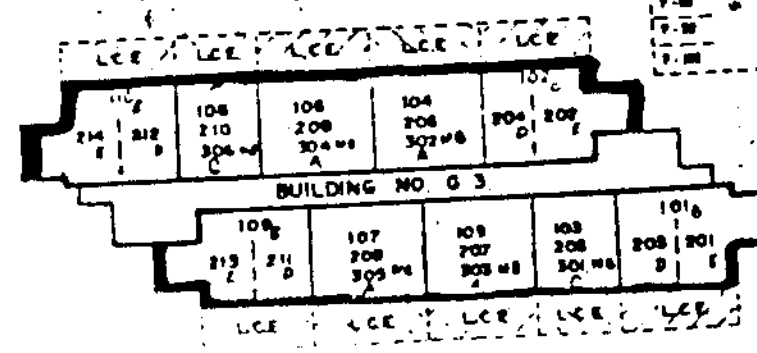
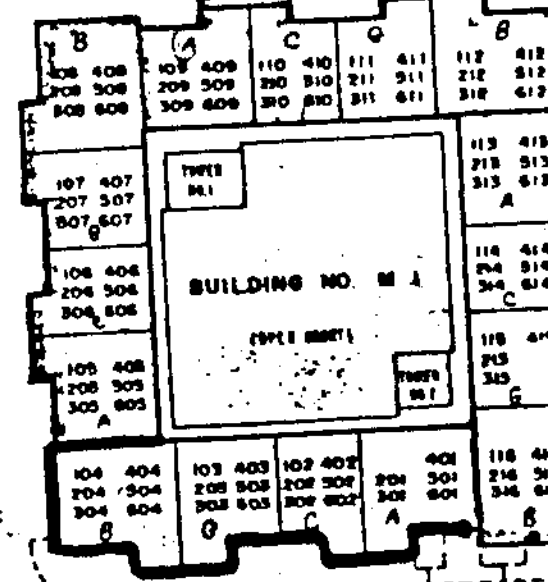
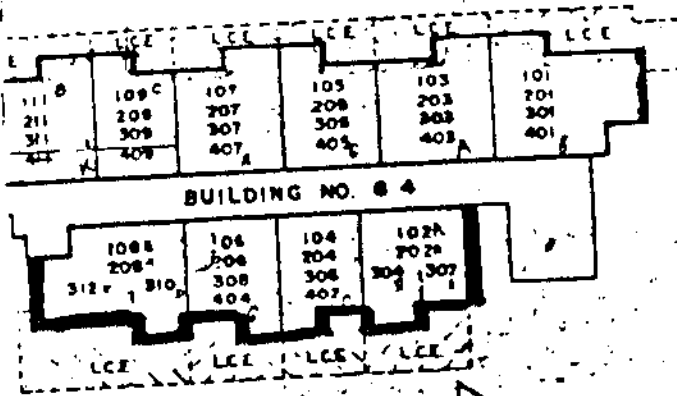
101 102 103 104 105 106 107 108 109 110 111 112 113 114 115 116 117 118 119 120 121 122 123 124 125 126 127 128 129 130 131 132 133 134 135 136 137 138 139 140 141 142 143 144 145 146 147 148 149 150 151 152 153 154 155 156 157 158 159 160 161 162 163 164 165 166 167 168 169 170 171 172 173 174 175 176 177 178 179 180 181 182 183 184 185 186 187 188 189 190 191 192 193 194 195 196 197 198 199 200

SEC. III

(C.B 10, PG.10)



SEC. II (C.B 8, PG 27)



- P-320
- P-319
- P-318
- P-317
- P-316
- P-315
- P-314
- P-313
- P-312
- P-311
- P-310
- P-309
- P-308
- P-307
- P-306
- P-305
- P-304
- P-303
- P-302
- P-301
- P-300
- P-299
- P-298
- P-297
- P-296
- P-295
- P-294
- P-293
- P-292
- P-291
- P-290
- P-289
- P-288
- P-287
- P-286
- P-285
- P-284
- P-283
- P-282
- P-281
- P-280
- P-279
- P-278
- P-277
- P-276
- P-275
- P-274
- P-273
- P-272
- P-271
- P-270
- P-269
- P-268
- P-267
- P-266
- P-265
- P-264
- P-263
- P-262
- P-261
- P-260
- P-259
- P-258
- P-257
- P-256
- P-255
- P-254
- P-253
- P-252
- P-251
- P-250
- P-249
- P-248
- P-247
- P-246
- P-245
- P-244
- P-243
- P-242
- P-241
- P-240
- P-239
- P-238
- P-237
- P-236
- P-235
- P-234
- P-233
- P-232
- P-231
- P-230
- P-229
- P-228
- P-227
- P-226
- P-225
- P-224
- P-223
- P-222
- P-221
- P-220
- P-219
- P-218
- P-217
- P-216
- P-215
- P-214
- P-213
- P-212
- P-211
- P-210
- P-209
- P-208
- P-207
- P-206
- P-205
- P-204
- P-203
- P-202
- P-201
- P-200
- P-199
- P-198
- P-197
- P-196
- P-195
- P-194
- P-193
- P-192
- P-191
- P-190
- P-189
- P-188
- P-187
- P-186
- P-185
- P-184
- P-183
- P-182
- P-181
- P-180
- P-179
- P-178
- P-177
- P-176
- P-175
- P-174
- P-173
- P-172
- P-171
- P-170
- P-169
- P-168
- P-167
- P-166
- P-165
- P-164
- P-163
- P-162
- P-161
- P-160
- P-159
- P-158
- P-157
- P-156
- P-155
- P-154
- P-153
- P-152
- P-151
- P-150
- P-149
- P-148
- P-147
- P-146
- P-145
- P-144
- P-143
- P-142
- P-141
- P-140
- P-139
- P-138
- P-137
- P-136
- P-135
- P-134
- P-133
- P-132
- P-131
- P-130
- P-129
- P-128
- P-127
- P-126
- P-125
- P-124
- P-123
- P-122
- P-121
- P-120
- P-119
- P-118
- P-117
- P-116
- P-115
- P-114
- P-113
- P-112
- P-111
- P-110
- P-109
- P-108
- P-107
- P-106
- P-105
- P-104
- P-103
- P-102
- P-101
- P-100
- P-99
- P-98
- P-97
- P-96
- P-95
- P-94
- P-93
- P-92
- P-91
- P-90
- P-89
- P-88
- P-87
- P-86
- P-85
- P-84
- P-83
- P-82
- P-81
- P-80
- P-79
- P-78
- P-77
- P-76
- P-75
- P-74
- P-73
- P-72
- P-71
- P-70
- P-69
- P-68
- P-67
- P-66
- P-65
- P-64
- P-63
- P-62
- P-61
- P-60
- P-59
- P-58
- P-57
- P-56
- P-55
- P-54
- P-53
- P-52
- P-51
- P-50
- P-49
- P-48
- P-47
- P-46
- P-45
- P-44
- P-43
- P-42
- P-41
- P-40
- P-39
- P-38
- P-37
- P-36
- P-35
- P-34
- P-33
- P-32
- P-31
- P-30
- P-29
- P-28
- P-27
- P-26
- P-25
- P-24
- P-23
- P-22
- P-21
- P-20
- P-19
- P-18
- P-17
- P-16
- P-15
- P-14
- P-13
- P-12
- P-11
- P-10
- P-9
- P-8
- P-7
- P-6
- P-5
- P-4
- P-3
- P-2
- P-1

